



www.spinelife.net

**BCP**

## Synthetic Bone Graft

Introducing 5g - 10g.

### MagiGraft® BCP

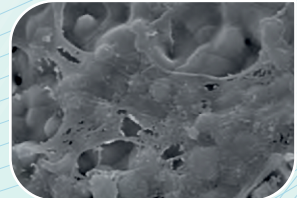
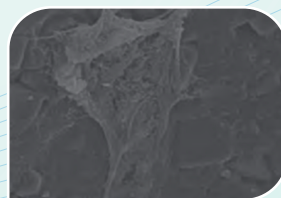
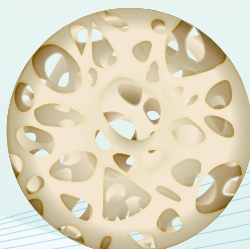
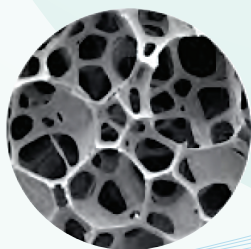
Synthetic ceramic based on calcium phosphate, designed to fill bone defects.

- **MagiGraft® BCP** induces the regeneration and growth of bones:
  - Stimulates the proliferation and the differentiation of the osteoblasts.
- **Composition:**
  - 75% hydroxyapatite
  - 25% Tricalcium Phosphate ( $\beta$ -TCP)
- Porosity highly intertwined with an excellent mechanic resistance.
- **MagiGraft® BCP** is replaced by new bone – the resorption has a place in two phases because of its composition.

### Indications

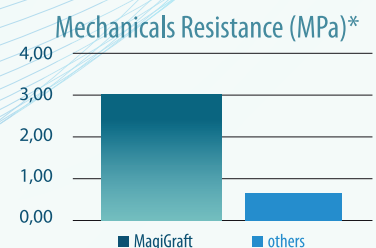
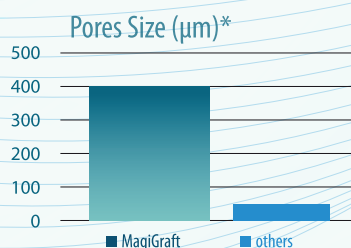
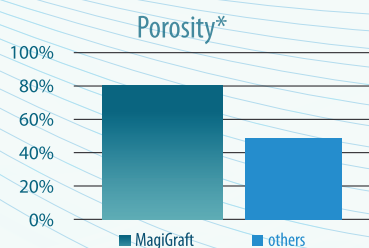
Designed to fill holes or swelling of the bone defects which are not intrinsic to the estabily of the bone structure:

- Fractures with bone defect.
- Backbone Arthrodesis.
- Tibial Osteotomy.
- Tibial and Femoral Fracture.
- Review of Knee and Hip Prothesis.
- Backbone Cirgury.



ADHESION TO THE OBSERVED CELLS AFTER 5 DAYS

Excellent Flexibility. Perfect Osteointegration and Osteoconduction. Exceptional Bioactivity.



**MagiGraft BCP acts a natural bone.**

**SpineLife**  
PROFESSIONAL COMPANY

References: • C. M. S. Ranito, F. A. Oliveira, J. P. Borges, "Mechanical behaviour of dense hydroxyapatite blocks", Advanced Materials Forum III, Vol 514-516, 1083 (2006); • C. M. S. Ranito, F. A. Oliveira, J. P. Borges, "Synthesis of calcium phosphate powders for biomedical applications using Taguchi's method", Advanced Materials Forum III, Vol 514-516, 1025 (2006); • C. M. S. Ranito, F. C. Oliveira, J. P. Borges, "Hydroxyapatite foams for bone replacement", Key Mater. Eng. 284-286 (2005) 341-344; • C. M. S. Ranito, "Fabrication of Hydroxyapatite foams bone medical applications", SPM, vol 15, n°3/4 (2003) 2-15;

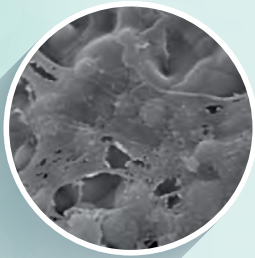
# Why you should choose MagiGraft BCP?



www.spinelife.net

**BCP**  
**Synthetic**  
**Bone Graft**

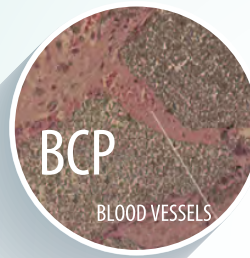
Introducing 5g - 10g.



Security



High Cohesiveness



Vascularization

## Maximum Security

100% Synthetic and 100% resorbable.

## Radiopaque

Allows to monitor the osteointegration to it's total absorption.

## Resorbable

Between 6 and 24 months, MagiGraft BCP is replaced by a new high quality bone.

## Multiple Geometries

Big variety of Granules, blocks, cylinders and wedges.

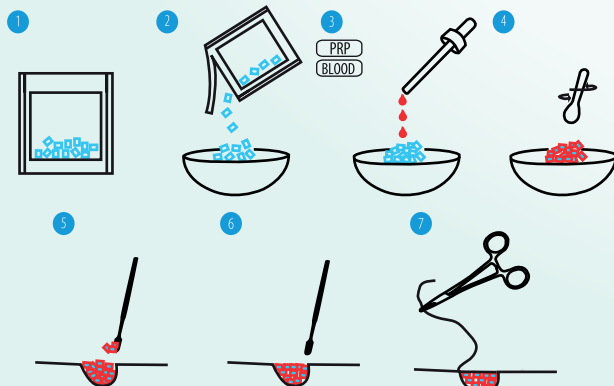
## High Cohesiveness

MagiGraft particles show high cohesiveness, which allows to keep the initial volumen to the cavity.

## Vascularization

MagiGraft BCP induces a noticeable vascularization.

### Easy Control and Application



#### Referencias:

- C. M. S. Ranito, F. A. Oliveira, J. P. Borges, "Mechanical behaviour of dense hydroxyapatite blocks", Advanced Materials Forum III, Vol 514-516, 1083 (2006);
- C. M. S. Ranito, F. A. Oliveira, J. P. Borges, "Synthesis of calcium phosphate powders for biomedical applications using Taguchi's method", Advanced Materials Forum III, Vol 514-516, 1025 (2006);
- C. M. S. Ranito, F. A. Oliveira, J. P. Borges, "Hydroxyapatite foams for bone replacement", Key Mater. Eng. 284-286 (2005) 341-344;
- C. M. S. Ranito, "Fabrication of Hydroxyapatite foams bone medical applications", SPM, vol 15, nº3/4 (2003) 2-15;

References	Geometries	Dimensions	Amount
BCP030405G	Granules	3 - 4 mm	5g x 1 Unity
BCP030410G	Granules	3 - 4 mm	10g x 1 Unity

#### AWARDS

- "Young entrepreneur" Award 2012.
- Internalization Award 2011.
- "Entrepreneur Woman" Award 2011.
- Portugal Entrepreneur Award 2011.
- BES Innovation Award 2009.
- Business Credit Medal 2009.
- Best Business idea Project Award 2008.
- Materials College Award — Engineers Order 2006.
- European Federation Award — Material Association 2003.

**MagiGraft®**



Made by:

Medbone® — Medical Devices Lda.

Centro Empresarial Lusoworld II - Rua Pé de Mouro,

nº 26 - Linhó, 2710-335 Sintra - Portugal.

Phone: (+351) 210 938 956

e-fax: (+351) 211 946 681 | e-mail: info@medbone.eu



**Spine Life**  
PROFESSIONAL COMPANY

www.spinelife.net

Distributed by: Spinelife Corp.  
4001 NW 97th Ave #301,  
Doral, FL 33178, EE. UU.  
Phone: +1 786 332 0777  
e-mail: fg@spinelife.net  
gia@spinelife.net